

The Removal Effect of Pollutants and Components in Extracellular Polymeric Substances from Aerobic Granular Sludge in Simultaneous Removal of Organic Matter and Ammonia Nitrogen

Y. Ren,^{a,*} Y. Liu,^b G. Hao,^b Y. Wen,^b Z. Chen,^b and L. Yan^{b,*}

^aSchool of Municipal and Environmental Engineering, Harbin Institute of Technology, Harbin 150090, PR China

^bSchool of Resource and Environment, Northeast Agricultural University, Harbin 150030, PR China

doi: 10.15255/CABEQ.2014.2137

Original scientific paper
Received: October 21, 2014
Accepted: December 6, 2015

This work studied the removal effect of pollutants and the components in extracellular polymeric substances (EPS) extracts obtained from aerobic granular sludge (AGS) with high concentration of ammonia nitrogen and analyzed EPS using Fourier-transformed IR (FTIR) spectrometer. The AGS demonstrated perfect performance in simultaneous removal of organic matter and ammonia nitrogen, and the removal rates were both maintained above 90 %, the stable nitrite accumulation was achieved as well. The main particle size was more than 1.4 mm and the higher electrical conductivity was caused by the existences of organic and mineral fractions in EPS. Ca, K, Fe, Mg, Zn, and Cu were the main mineral elements contained in EPS extracts. Mineral fractions of EPS improve the stabilization of the AGS.

Key words:

extracellular polymeric substances, aerobic granular sludge, ammonia nitrogen, mineral fraction, organic fraction

Introduction

Biological processes, such as activated sludge and granular sludge are widely used to remove organic pollutants as well as inorganic pollutants, such as metallic elements^{1–3}, which are known to be potentially toxic, and impact the performance of biological waste treatment processes⁴. Granular sludge is a dense aggregate of microorganisms, minerals, and microbial produced compounds such as extracellular polymeric substances (EPS)^{5,6}.

Compared to traditional activated sludge technology, AGS as a new type of microbe auto-immobilization technology, has many advantages, such as compact structure, fast settling velocity, higher sludge concentration, and ability to withstand high organic loading^{7,8}. Many researches mainly try to study the operating conditions⁹, microbiological properties^{10,11}, physicochemical characteristics^{12,13}, and extracellular polymeric substances of granular sludge^{14,15}. The AGS technology is used for treating all kinds of wastewater, including organic matter, nitrogen, phosphorus, and toxic substances^{16–19}.

EPS is a complex high-molecular-weight mixture of polymers in AGS. The EPS is a network bacteria embedded²⁰, has a significant effect on the

physicochemical properties of AGS, including structure, surface charge, flocculation, settling properties, and adsorption ability; plays a crucial role in biological wastewater treatment^{21–23}. It not only results from active bacterial secretion, but also from cell lysis and effluent molecules²⁴. EPS is considered as an organic product with mineral cations bound. Guibaud *et al.*²⁵ have showed that some mineral particles, such as manganese oxides and iron oxy-hydroxides in the EPS extract can improve the ability of the EPS binding lead or cadmium cations. However, the mineral fraction of the EPS extracts, which is too often neglected in EPS studies, can affect the physicochemical properties of EPS²⁶.

The aim of this study is to investigate the removal effect of pollutants and the components, including the organic and mineral fractions, and especially to evaluate the mineral fraction in EPS to improve the stabilization of the AGS.

Methods

Experimental sludge and wastewater

The experimental sludge used was the aerobic granular sludge with simultaneous removal of organic matter and ammonia nitrogen taken in a steady lab run for more than one year²⁷. A synthetic

*Corresponding author: Tel.: +86 451 86283697; fax: +86 451 5519 1170. E-mail address: renyuanhit@163.com, yanll98@163.com.

wastewater was used. Glucose and sodium acetate were used as carbon sources, and ammonium chloride was the nitrogen source. Details of the synthetic wastewater composition are given in Table 1. 0.6 mL L⁻¹ trace element was added to the wastewater above to supply the necessary elements for microbial growth²⁷.

Table 1 – Components of the synthetic wastewater

Components	Concentration (mg L ⁻¹)	Components	Concentration (mg L ⁻¹ , except pH)
COD	100–350	pH	7.5–8.0
NH ₄ ⁺ -N	80–120	CaCl ₂	34
PO ₄ ³⁻ -P	5–10	MgSO ₄ · 7H ₂ O	21

Reactor description

Plexiglas column SBR reactor was used as experimental set-up. The height of the reactor was 60 cm, with inner diameter of 10 cm, and effective volume of 4.2 L. The volumetric exchange ratio of liquid was 50 %. The aeration system comprised an air compressor and a microporous aerator (sintering sand core) on the bottom. The aeration quantity was controlled by gas flowmeter. A programmable time controller was used to regulate the air compressor to realize the intermittent operation. The reactor was operated for 4 cycles every day. The cycles were distributed as follows: 10 minutes of feeding, 330 minutes of aeration, 5 minutes of settling, and 15 minutes of effluent withdrawal. Control parameters: the operating temperature was room temperature (20 °C), dissolved oxygen (DO) was controlled between 6.0 and 8.0 mg L⁻¹. The sludge concentration was 4500 mg L⁻¹. The pH in reactor was controlled by adding 1:14 H₂SO₄ and 0.03 mol L⁻¹ NaHCO₃.

Determination of physicochemical properties

The analyses of COD, NH₄⁺-N, NO₂⁻-N, NO₃⁻-N and mixed liquid suspended solids (MLSS) were performed according to the respective standard method²⁸. UV absorbance was measured with a UV-1800 spectrophotometer (Shimadzu Co., Tokyo, Japan). The pH values were measured by a pH meter (pHS-3C, Shanghai Weiye Co., Ltd., China). DO concentration was determined by a DO meter (FG4-FK, Mettler Toledo Co., Ltd, Switzerland). The particle sizes were measured using an image analysis system (Image-pro Express 5.1, Media Cybernetics). The redox potential and the electrical conductivity were determined by pHS-3C precision pH meter (saturated calomel electrode, SCE; platinum electrode) and conductivity meter, respectively.

EPS extraction method

No standard extraction method has been developed for EPS. Chemical extraction protocols have also shown to contaminate the EPS extracts by impurities or carrying over of the extractant itself²⁶. According to some studies, the molecular movement is enhanced, which accelerates the EPS dissolution²⁹, so heating is the most effective method for EPS extraction due to its minimal cell lysis and more EPS extracted^{30,31}. In a typical procedure: 100 mL of sample was centrifuged (4000 rpm, 5 minutes), and the supernatant was discarded, and then diluted with deionized water to its original volume. The diluted sample was heated (80 °C, 10 minutes), centrifuged (8000 × g, 20 minutes), and then filtered through 0.22 μm cellulose membrane filters. The obtained EPS extracts were stored at -20 °C for further analysis.

Analysis of EPS

Analysis of organic matter

Protein measurement was performed using a modified Lowry method³². Bovine Serum Albumin (BSA) was used as standard. Polysaccharide concentration was determined using the Anthrone method³³. Glucose was used as standard. Each measurement was undertaken on duplicate samples.

Analysis of mineral fractions

The mineral fractions in EPS were determined according to literature²⁶. The details are as followed: A total of 3 mL of EPS were digested through the addition of 2 mL of hydrogen peroxide for 24 hours. Then, 3 mL of nitric acid and 1 mL of perchloric acid were added to the solution. Digestion was again performed after another 24 hours. After the second digestion, the samples were diluted with ultrapure water to 50 mL and then filtered through 0.22 μm cellulose nitrate membrane filters. Inductively coupled plasma optical emission spectrometry (ICP-OES, Perkin Elmer Optima 8300, America) determined the contents of mineral fractions.

Fourier-transformed IR (FTIR) spectroscopy

The FT-IR spectra of the EPS samples were recorded using an FTIR spectrometer (Avatar 370, Thermo Nicolet, America). The freeze-dried EPS samples were initially mixed with KBr (1 mg of EPS per 100 mg of KBr). The KBr pellets were heated until dried, and the dried samples were kept under vacuum in desiccators prior to use. The blank was corrected using a clean KBr pellet. The spectra were obtained with a resolution of 4 cm⁻¹ and a scan range of 400–4000 cm⁻¹.

Results and discussion

Particle size distribution characteristics of granules

Fig. 1 is particle size distribution of granules in stable operation reactor. It was observed that the main particle size of the AGS was more than 1,400 μm , of which the masses of particle sizes that were less than 500 μm , 500–830 μm , 830–1,000 μm , 1000–1400 μm , more than 1400 μm accounted for 15.73 %, 3.32 %, 0.49 %, 19.86 %, 60.60 %, respectively, of the total mass of AGS. The mature granular sludge was tawny, its outline was spheroidic or round, its boundary was clear (Fig. 2a). There are many cocci and a small number of bacillus distributing on the surface of granular sludge (Fig. 2b). The mature granular sludge having bigger particles, and dense structure has an excellent settling property³⁴. Compared with traditional sludge (particles of traditional activated sludge are smaller than 150 μm , loose sludge flocs, settling rate no more than 10 m h^{-1}), the average settling rate of the mature granular is 3.30 cm s^{-1} . The particle size of the granules was influenced by many factors, such as the COD/N, short operating time (60 days) and the configuration of reactors¹⁰. COD/N ratio plays a significant role in nitrifying sludge granulation. To some extent, there was a trend towards larger average granule diameter under higher COD/N ratio and load³⁵. In contrast, Tsuneda *et al.*³⁶ obtained smaller granule diameter of granular sludge which took longer because the influent did not contain organic substrate, whereas Gao *et al.*³⁷ also obtained a smaller granule diameter because of lower substrate load. Moreover, granule diameter of granular sludge was related to the operating time and configuration of reactors, granule diameter of granular sludge increased with the extension of operating time generally³⁸. However, the effect of reactor configuration

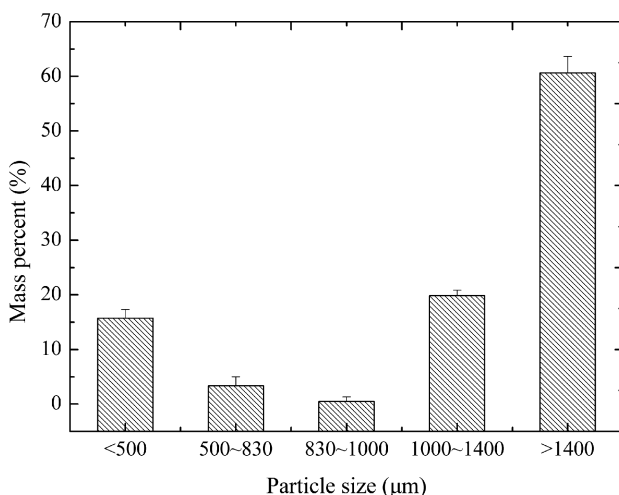
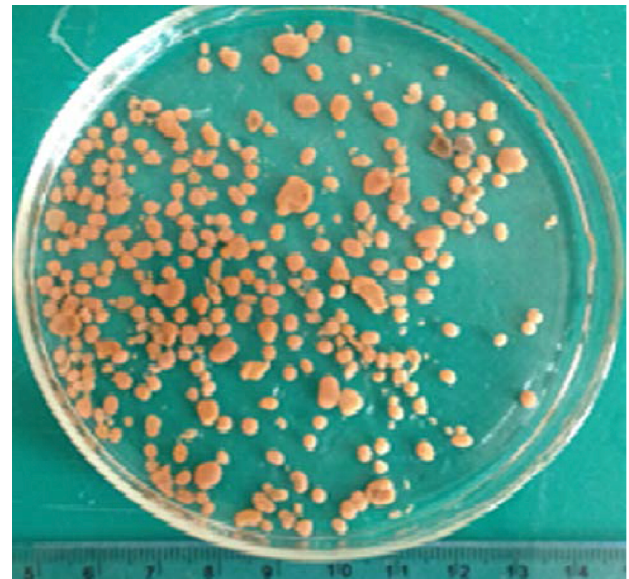
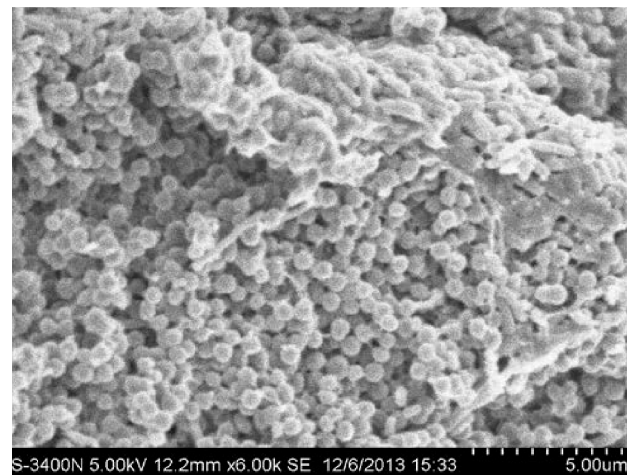


Fig. 1 – Particle size distribution of granules



a



b

Fig. 2 – Shape (a) and SEM observation (b) of AGS

on granule diameter of granular sludge is more complicated, which needs further research¹⁰.

Removal ratio of AGS on pollutants

Removal ratio of AGS on $\text{NH}_4^+\text{-N}$

Influent and effluent $\text{NH}_4^+\text{-N}$ concentrations and $\text{NH}_4^+\text{-N}$ removal efficiency of AGS is shown in Fig. 3. The effluent $\text{NH}_4^+\text{-N}$ concentrations were stable between 0.08 and 8.78 mg L^{-1} at a volumetric exchange ratio of 50 %. From days 19 to 63, the $\text{NH}_4^+\text{-N}$ removal efficiencies improved between 92.33 and 99.92 %. The $\text{NH}_4^+\text{-N}$ removal capacity indicated a good enrichment of nitrifiers, which could have resulted in the formation of AGS. According to the literature, which have well demonstrated good performance in nitrogen removal due to the composition of granular microbial communi-

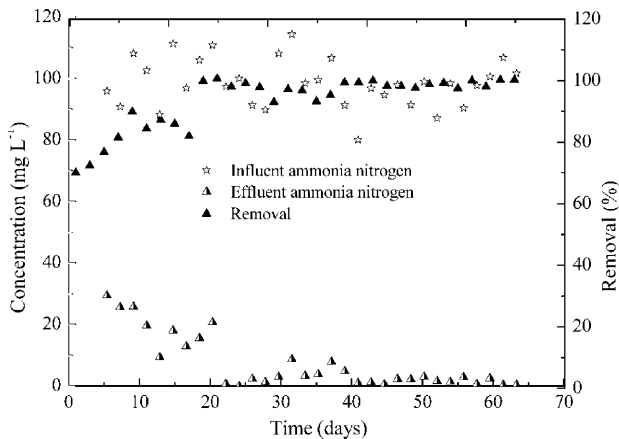


Fig. 3 – Influent and effluent $\text{NH}_4^+\text{-N}$ concentrations and $\text{NH}_4^+\text{-N}$ removal efficiency of AGS

ties, including heterotrophic, aerobic bacteria grown on the outside, ammonium-oxidizing bacteria in the middle, and facultative and anaerobic bacteria in the core of the granules^{39,40}. Wei *et al.*⁴¹ reported that the average $\text{NH}_4^+\text{-N}$ removal efficiency kept at 96 % for a long time in the aerobic granule-based bioreactor. The $\text{NH}_4^+\text{-N}$ removal efficiency was 99 % running 8 h with the use of granular sludge investigated by Cydzik-Kwiatkowska *et al.*⁴² However, from days 1 to 17 in the experiment, the $\text{NH}_4^+\text{-N}$ removal efficiencies were only between 69.30 and 89.22 %, the average removal efficiency was 92.66 %. Compared to the literature, lower removal efficiency resulted from the small specific area of particles due to their larger sizes in this experiment, $\text{NH}_4^+\text{-N}$ incompletely exposed to the aerobic bacteria grown outside. Otherwise, because of the dense structure of the granules and the sticky EPS accumulated on the surface of bacterial cells for adhesion during the granulation process, $\text{NH}_4^+\text{-N}$ cannot be oxidized by the ammonium-oxidizing bacteria in the middle.

Removal ratio of AGS on COD

Fig. 4 shows the influent and effluent COD concentrations and COD removal efficiency of AGS. Unstable behavior of practical wastewater with a wide fluctuation of influent organics was observed. From days 1 to 35, the influent COD concentrations increased from 106.35 to 303.14 mg L^{-1} . From days 23 to 49, the effluent COD concentrations decreased stepwise from 91.71 to 1.31 mg L^{-1} . Afterwards, the effluent COD concentrations were between 2.93 and 28.85 mg L^{-1} . From days 31 to 63, the removal efficiency of COD was between 80.59 and 99.37 %. The average removal efficiency was 90.22 %. The result of this study indicated good performance in organics removal in accordance with those performed in other researches. Ni *et al.*⁴³ reported that the average COD removal effi-

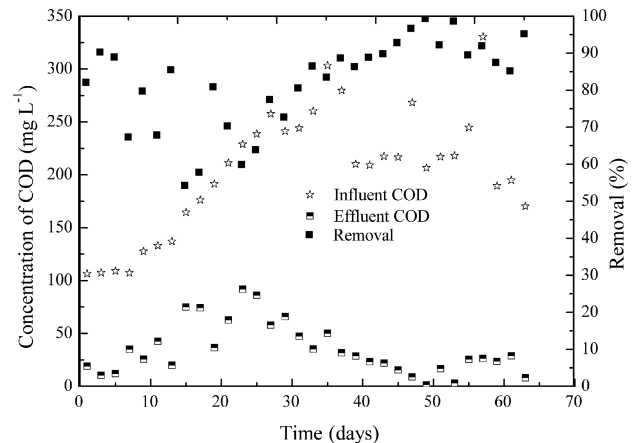


Fig. 4 – Influent and effluent COD concentrations and COD removal efficiency of AGS

ciency of aerobic granulation kept at 90 % for a long time in the bioprocess. The organics removal efficiency of AGS cultivated by Schwarzenbeck *et al.*⁴⁴ reached 90 % after complete granulation. The researches above have well documented the perfect removal efficiency of AGS on organics in the treatment of various organic wastewater.

Effluent nitrite and nitrate of AGS

As shown in Fig. 5, the effluent concentration of nitrite nitrogen was between 12.52 and 57.59 mg L^{-1} , and nitrate nitrogen concentration maintained below 8.56 mg L^{-1} . Nitrite accumulation rates ($\text{NO}_2\text{-N}/\text{NO}_x\text{-N}$) were between 78.81 and 96.83 % in the effluent, so that partial nitrification occurred in the reactor. Nitrite bacteria could be confirmed as the dominant nitrifying bacteria in the system. Controlling the DO concentration, temperature, SRT, pH, free ammonia (FA), and free nitrous acid (FNA) in the reactor could achieve nitrite accumulation. In this experiment, DO controlled between 6.0 and 8.0 mg L^{-1} , the inflow concentration of nitrite nitrogen controlled

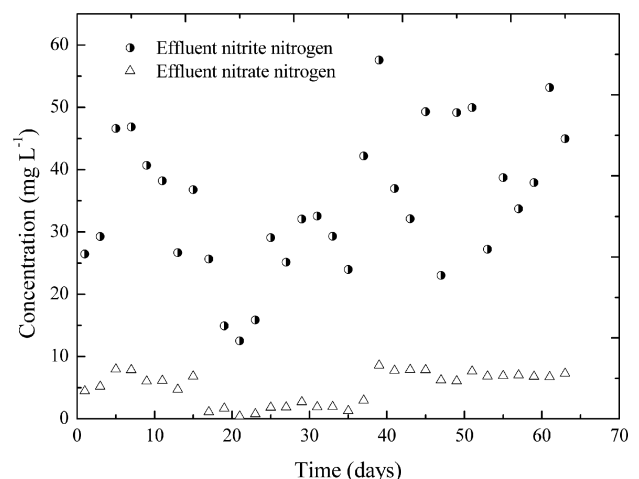


Fig. 5 – Effluent $\text{NO}_2\text{-N}$ and $\text{NO}_3\text{-N}$ concentrations of AGS

below 4 mg L^{-1} , at room temperature ($25 \text{ }^\circ\text{C}$), and SRT controlled at 15 d, were adverse to nitrite accumulation. Therefore, according to analysis, high pH (between 7.5 and 8.0) and the FA concentration ($1.20\text{--}1.71 \text{ mg L}^{-1}$) might be the main reasons for nitrite accumulation. This result was in accordance with the literature^{45–47}. Besides, delamination of AGS might also be a reason for the nitrite accumulation. Shi *et al.*³⁹ reported that the amount of nitrosation bacteria was more than that of nitrifying bacteria in AGS, and most of the nitrosation bacteria that adhered to the surface of granules could obtain sufficient DO to oxidate ammonia nitrogen to nitrite nitrogen. While nitrifying bacteria had distributed in the inner portion of the granules lacking in DO, the oxidizing ability was inhibited. This corresponded to the experimental results.

Analysis of EPS

The organic fraction and physicochemical properties of EPS

The organic fraction and physicochemical properties of EPS are summarized in Table 2. The results show that the electrical conductivity was $2.25 \cdot 10^2 \text{ } \mu\text{m cm}^{-1}$, and redox potential was 367.2 mV. Recently, a few studies on the electrical conductivity of EPS have been performed, whose theory and the influence factors need to be further studied.

Table 2 – *Organic fraction and physicochemical properties of EPS*

Indexes	Results	Indexes	Results
Electrical conductivity	$2.25 \cdot 10^2 \text{ } \mu\text{m cm}^{-1}$	Protein	38.36 mg g^{-1}
Redox potential	367.2 mV	Polysaccharide	18.67 mg g^{-1}
		Protein/ polysaccharide	2.05

The organic fraction of EPS is mainly composed of protein and polysaccharide. The results show that each gram of MLSS, the contents of polysaccharide and protein in the EPS extracted by the heating method were 18.67 and 38.36 mg, respectively, and the ratio of protein/polysaccharide 2.05. The data for protein and polysaccharide contents obtained for EPS are in accordance with the concentrations observed by Sheng *et al.*⁴⁸ Moreover, the large yields of both are due to the fact that, during the extraction procedure by heating, the proteins and polysaccharides could have hydrolysed⁴⁹, and the bound EPS, strongly attached to activated sludge, was allowed to be extracted, since both kinds of EPS exist in the sludge in this extraction

procedure. In addition, the result of the ratio of protein/polysaccharide is in accordance with the one reported by Liu and Fang⁵⁰, and confirms that the EPS extracted in this study were not contaminated by intracellular materials from bacteria of AGS. These authors have shown that the ratio of protein/polysaccharide from activated sludge varies from 0.5 to 21.2. When the ratio is high, the EPS are predominantly composed of protein, thus the protein originated mainly from cell lysis or exocellular enzymes.

Mineral fractions

Fig. 6 shows the chemical composition of the mineral fractions in the EPS. Many different inorganic cations were present in EPS samples. Phosphorus was the main mineral compound (data not presented), whereas Ca, K, Fe, Mg, Zn and Cu were the main metallic elements. The presence of Ca and Fe confirms their role in the maintenance of the granular structure, and they are necessary for the granulation of sludge, and integrated in the granule in important quantities⁵¹. Ca and Fe act as the bridging ions⁵², therefore, the binding of divalent cations with EPS stabilizes the structure of the EPS matrix. Moreover, in the EPS, the ionic nature of cell surfaces and the molecules allows interactions with cations, Zn and Cu should be preferentially present inside the bacterial cell due to their biological activity. Due to the presence of various types of binding sites for cations in the organic compounds of the EPS^{24,26}, a part of the multivalent inorganic cations, such as Ca^{2+} , Mg^{2+} , and Fe^{2+} , measured in the EPS extracts, are very likely bound to the organic molecules in the EPS in order to provide structural stability in AGS^{53,54}. Mn and Ni are the trace elements in the EPS, the contents are 0.008 and 0.017 mg L^{-1} respectively.

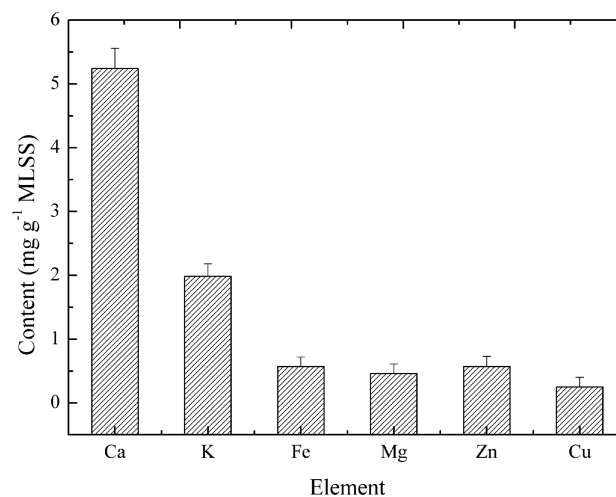


Fig. 6 – *Main elements content of the mineral fractions in the EPS (mg g⁻¹, MLSS)*

IR spectra examples of EPS extracted from AGS are represented. The IR spectra show the contribution, as well as the superposition of absorption bands from organic and inorganic compounds, except for absorption bands below 1000 cm^{-1} which may be essentially attributed to inorganic compounds⁵⁵, such as phosphate or sulfur functional groups. Several intense characteristic bands can be attributed to protein and polysaccharide functional groups. Carboxylic groups, under acid or basic salt form, are responsible for some less intense bands. The stretching vibration of OH can be observed⁵⁵ at 3392.19 cm^{-1} as well as 1654.49 cm^{-1} , and a weak symmetric stretching vibration band of CH_2 at 2927.57 cm^{-1} and 1454.26 cm^{-1} . The stretching vibration of C-N observed at 1544.15 cm^{-1} of proteins. The bands at 1400.51 cm^{-1} and 1245.86 cm^{-1} may respectively be assigned to the C=O in the carboxylates and carboxylic acids. The absorption peak observed at 1083.46 cm^{-1} in the range from 1000 cm^{-1} to 1200 cm^{-1} is known to be typical of all sugar derivatives⁵⁶. The different functional groups observed in the EPS samples agree with Comte *et al.*⁵⁷. Divalent cations are able to link to the phosphate and carboxyl groups. Therefore, FTIR was used to study the functional groups of microbial aggregates and their associated EPS.

Conclusion

The removal ratio of COD and $\text{NH}_4^+\text{-N}$ were analyzed. The AGS demonstrated good performance in simultaneous organic carbon and nitrogen removal, and the removal rates were 90.22 and 92.66 %. The particle size above 0.5 mm was 84.27 %, and the main particle size above 1.4 mm was 60.60 %. The electrical conductivity of EPS was $2.25 \cdot 10^2\text{ }\mu\text{m cm}^{-1}$, and the mineral fractions of the EPS extract were determined to exist. Ca, K, Fe, Mg, Zn, and Cu were the main mineral elements found in EPS extracts, Mn and Ni were the trace elements in EPS extracts. In this study, the organic and mineral fractions in EPS were studied; however, the relationship between them is unclear. Meanwhile, in the forming process of granular sludge, the function of EPS need further research.

ACKNOWLEDGMENTS

This work was supported by Young academic backbone support project of Heilongjiang Province (NO. 1254G010), Academic backbone support project of Northeast Agricultural University (15XG07), The National Key Technology R&D Program (2013BAD21B01).

References

- Kavitha, S., Adish Kumar, S., Kaliappan, S., Adish Kumar, S., Ick Tae Yeom, Rajesh Banu, J., Accelerating the sludge disintegration potential of a novel bacterial strain *Planococcus jake 01* by CaCl_2 induced deflocculation, *Bioresour. Technol.* **175** (2014) 396. doi: <http://dx.doi.org/10.1016/j.biortech.2014.10.122>
- Kavitha, S., Adish Kumar, S., Kaliappan, S., Ick Tae Yeom, Rajesh Banu, Improving the amenability of municipal waste activated sludge for biological pretreatment by phase-separated sludge disintegration method, *Bioresour. Technol.* **169** (2014) 700. doi: <http://dx.doi.org/10.1016/j.biortech.2014.07.065>
- Wei, D., Li, M., Wang, X., Han, F., Li, L., Guo, J., Ai, L., Fang, L., Liu, L., Du, B., Wei, Q., Extracellular polymeric substances for Zn (II) binding during its sorption process onto aerobic granular sludge, *J. Hazard. Mater.* **301** (2016) 407. doi: <http://dx.doi.org/10.1016/j.jhazmat.2015.09.018>
- Zhang, Z., Deng, R., Cheng, Y., Zhou, Y., Zhang, X., Wang, H., Jin, R., Buayi, X., Behavior and fate of copper ions in an anammox granular sludge reactor and strategies for remediation, *J. Hazard. Mater.* **300** (2015) 838. doi: <http://dx.doi.org/10.1016/j.jhazmat.2015.08.024>
- Li, A., Li, X., Yu, H., Aerobic sludge granulation facilitated by activated carbon for partial nitrification treatment of ammonia-rich wastewater, *Chem. Eng. J.* **218** (2013) 253. doi: <http://dx.doi.org/10.1016/j.cej.2012.12.044>
- Liu, Y., Tay, J. H., State of the art of biogranulation technology for wastewater treatment, *Biotechnol. Adv.* **22** (2004) 533. doi: <http://dx.doi.org/10.1016/j.biotechadv.2004.05.001>
- Thanh, B. X., Visvanathan, C., Aim, R. B., Characterization of aerobic granular sludge at various organic loading rates, *Process Biochem.* **44** (2009) 242. doi: <http://dx.doi.org/10.1016/j.procbio.2008.10.018>
- Gao, D., Yuan, X., Liang, H., Reactivation performance of aerobic granules under different storage strategies, *Water Res.* **46** (2012) 3315. doi: <http://dx.doi.org/10.1016/j.watres.2012.03.045>
- Lochmatter, S., Holliger, C., Optimization of operation conditions for the startup of aerobic granular sludge reactors biologically removing carbon, nitrogen, and phosphorous, *Water Res.* **59** (2014) 58. doi: <http://dx.doi.org/10.1016/j.watres.2014.04.011>
- Liang, Y. H., Li, D., Zeng, H. P., Zhang, C. D., Zhang, Z., Rapid start-up and microbial characteristics of partial nitrification granular sludge treating domestic sewage at room temperature, *Bioresour. Technol.* **196** (2015) 741. doi: <http://dx.doi.org/10.1016/j.biortech.2015.08.003>
- Lv, Y., Wan, C., Liu, X., Zhang, Y., Lee, D. J., Tay, J. H., Drying and re-cultivation of aerobic granules, *Bioresour. Technol.* **129** (2013) 700. doi: <http://dx.doi.org/10.1016/j.biortech.2012.12.178>
- Liu, Y., Yang, S., Qin, L., Tay, J. H., A thermodynamic interpretation of cell hydrophobicity in aerobic granulation, *Appl. Microbiol. Biotechnol.* **64** (2004) 410. doi: <http://dx.doi.org/10.1007/s00253-003-1462-9>
- Liu, Y., Yang, S., Tay, J. H., Liu, Q., Qin, L., Li, Y., Cell hydrophobicity is a triggering force of biogranulation, *Enzyme Microb. Technol.* **34** (2004) 371. doi: <http://dx.doi.org/10.1016/j.enzmictec.2003.12.009>
- Mahendran, B., Jared Fein, Steven N. Liss, The effects of extracellular polymeric substances on the formation and stability of biogranules, *Water Res.* **82** (2015) 104.

15. Wang, R., Peng, Y., Cheng, Z., Ren, N., Understanding the role of extracellular polymeric substances in an enhanced biological phosphorus removal granular sludge system, *Bioresour. Technol.* **169** (2014) 307.
doi: <http://dx.doi.org/10.1016/j.biortech.2014.06.040>
16. Basheer, F., Farooqi, I. H., Biodegradation of p-cresol by aerobic granules in sequencing batch reactor, *J. Environ. Sci.* **24** (2012) 2012.
doi: [http://dx.doi.org/10.1016/S1001-0742\(11\)60988-1](http://dx.doi.org/10.1016/S1001-0742(11)60988-1)
17. Zhou, X., Chen, C., Wang, A., Liu, L., Ho, K. L., Ren, N., Lee, D. J., Rapid acclimation of methanogenic granular sludge into denitrifying sulfide removal granules, *Biore-sour. Technol.* **102** (2011) 5244.
doi: <http://dx.doi.org/10.1016/j.biortech.2011.01.049>
18. Zhang, Y., Tay, J. H., Alternated phenol and trichloroethy-lene biodegradation in an aerobic granular sludge reactor, *Biochem. Eng. J.* **106** (2016) 1.
doi: <http://dx.doi.org/10.1016/j.bej.2015.10.026>
19. Othman, I., Aznah, A. N. Z., Rosman, U. N. H., Harum, H. N. D., Chelliapan, S. S. D., Livestock wastewater treatment using aerobic granular sludge, *Bioresour. Technol.* **133** (2013) 630.
doi: <http://dx.doi.org/10.1016/j.biortech.2013.01.149>
20. Liu, H., Fang, H. P., Extraction of extracellular poly-meric substances (EPS) of sludges, *J. Biotechnol.* **95** (2002) 249.
doi: [http://dx.doi.org/10.1016/S0168-1656\(02\)00025-1](http://dx.doi.org/10.1016/S0168-1656(02)00025-1)
21. Sheng, G., Yu, H., Li, X., Extracellular polymeric substances (EPS) of microbial aggregates in biological wastewater treatment systems: A review, *Biotechnol. Adv.* **28** (2010) 882.
doi: <http://dx.doi.org/10.1016/j.biotechadv.2010.08.001>
22. Caudan, C., Filali, A., Spérandio, M., Girbal-neuhauserr, E., Multiple EPS interactions involved in the cohesion and structure of aerobic granules, *Chemosphere.* **117** (2014) 262.
doi: <http://dx.doi.org/10.1016/j.chemosphere.2014.07.020>
23. Zhu, L., Lv, M., Dai, X., Yu, Y., Qi, H., Xu, X., Multiple EPS interactions involved in the cohesion and structure of aerobic granules, *Bioresour. Technol.* **107** (2012) 46.
doi: <http://dx.doi.org/10.1016/j.biortech.2011.12.008>
24. Neu, J., Wingender, T. R., Flemming, H. C., *Microbial Ex-tracellular Polymeric Substances, Characterization, Struc-ture and Function.* Berlin, Springer, (1999).
25. Guibaud van Hullebusch, G., Bordas, E., F., Joussein, Abzac P d', E., Joussein, Sorption of Cd (II) and Pb (II) by exopolymeric substances (EPS) extracted from activated sludges and pure bacterial strains, modeling of the metal/ligand ratio effect and role of the mineral fraction, *Biore-sour. Technol.* **100** (2009) 2959.
26. Pd' Abzac, Bordas, F., Joussein, E., Eric van, H., Piet, N. L. L., Gilles, G., Characterization of the mineral fraction asso-ciated to extracellular polymeric substances (EPS) in anaer-obic granular sludges, *Environ. Sci. Technol.* **44** (2010) 412.
doi: <http://dx.doi.org/10.1021/es901912g>
27. Yan, L., Liu, Y., Ren, Y., Ying, Z., Analysis of the character-istics of short-cut nitrifying granular sludge and pollutant removal processes in a sequencing batch reactor, *Biopro-cess Biosyst. Eng.* **37** (2014) 125.
doi: <http://dx.doi.org/10.1007/s00449-013-1006-3>
28. APHA. Standard Methods for the Examination of Water and Wastewater. 20th ed.: American Public Health Association/ American Water Works Association/Water Environment Federation, Washington D.C. USA, 1998.
29. Li, X., Yang, S., Influence of loosely bound extracellular polymeric substances (EPS) on the flocculation, sedimenta-tion and dewaterability of activated sludge, *Water Res.* **41** (2007) 1022.
doi: <http://dx.doi.org/10.1016/j.watres.2006.06.037>
30. Brown, M. J., Lester, J. N., Comparison of bacterial extra-cellular polymer extraction methods, *Appl. Environ. Micro-biol.* **40** (1980) 179.
31. Bura Cheung, R. M., Liao, B., Finlayson, J., Droppo, I. G., Leppard, G., Composition of extracellular polymeric sub-stances in the activated sludge floc matrix, *Water Sci. Technol.* **37** (1998) 325.
32. Lowry, O. H., Rosebrough, N. J., Farr, A. L., Randall, R. G., Protein measurement with the Folin phenol reagent, *J. Biol. Chem.* **193** (1951) 265.
33. Gaudy, A. F., Colorimetric determination of protein and carbohydrate, *Ind. Water Wastes.* **7** (1962) 17.
34. Campos, J. L. s, Garrido-Fernández, J. M., Méndez, R., Lema, J. M., Nitrification at high ammonia loading rates in an activated sludge unit, *Bioresour. Technol.* **68** (1999) 141.
doi: [http://dx.doi.org/10.1016/S0960-8524\(98\)00141-2](http://dx.doi.org/10.1016/S0960-8524(98)00141-2)
35. Li, A., Yang, S., Li, X., Gu, J., Microbial population dynam-ics during aerobic sludge granulation at different organic loading rates, *Water Res.* **42** (2008) 3552.
doi: <http://dx.doi.org/10.1016/j.watres.2008.05.005>
36. Tsuneda, S., Nagano, T., Hoshino, T., Ejiri, Y., Noda, N., Hirata, A., Characterization of nitrifying granules produced in an aerobic upflow fluidized bed reactor, *Water Res.* **37** (2003) 4965.
doi: <http://dx.doi.org/10.1016/j.watres.2003.08.017>
37. Gao, J., Guo, J., Influence of SBR drainage height and di-ameter ratio on aerobic sludge granulation, *China Environ. Sci.* **28** (2008) 512.
38. Shi, X., Yu, H., Sun, Y., Huang, X., Characteristics of aerobic granules rich in autotrophic ammonium-oxidizing bacteria in a sequencing batch reactor, *Chem. Eng. J.* **147** (2009) 102.
doi: <http://dx.doi.org/10.1016/j.cej.2008.06.037>
39. Figueroa, M., Mosquera-Corral, A., Campos, J. L., Men-daz, K., Treatment of saline wastewater in SBR aerobic granular reactors, *Water Sci. Technol.* **58** (2008) 479.
doi: <http://dx.doi.org/10.2166/wst.2008.406>
40. Ni, B., Yu H., Mathematical modeling of aerobic granular sludge: A review, *Biotechnol. Adv.* **28** (2010) 895.
doi: <http://dx.doi.org/10.1016/j.biotechadv.2010.08.004>
41. Wei, D., Wei, S., Zhang, Y., Qiao, Z., Yao, Z., Zhao, W., Zhao, J., Chen, G., Wei, Q., Aerobic granulation and nitro-gen removal with the effluent of internal circulation reactor in start-up of a pilot-scale sequencing batch reactor, *Bio-process Biosyst. Eng.* **35** (2012) 1489.
doi: <http://dx.doi.org/10.1007/s00449-012-0738-9>
42. Cydzik-Kwiatkowska, A., Zielińska, M. K., Bernat, Wo-jnowska-Baryła, I., Wojnowska-Baryła, I., Truchan, T., Treatment of high-ammonium anaerobic digester supernat-ant by aerobic granular sludge and ultrafiltration processes, *Chemosphere* **90** (2013) 2208.
doi: <http://dx.doi.org/10.1016/j.chemosphere.2012.09.072>
43. Ni, B., Xie, W., Yu, H., Wang, Y., Wang, G., Dai, X., Granu-lation of activated sludge in a pilot-scale sequencing batch reactor for the treatment of low-strength municipal waste-water, *Water Res.* **43** (2009) 751.
doi: <http://dx.doi.org/10.1016/j.watres.2008.11.009>
44. Schwarzenbeck, N., Borges, J. M., Wilderer, P. A., Treat-ment of dairy effluents in an aerobic granular sludge se-quencing batch reactor, *Appl. Microbiol. Biotechnol.* **66** (2005) 711.
doi: <http://dx.doi.org/10.1007/s00253-004-1748-6>

45. Wan, C., Sun, S., Lee, D. J., Liu, X., Wang, L., Yang, X., Pan, X., The effect of pH on partial nitrification-denitrification rate of high ammonia-containing wastewater, *Biore-sour. Technol.* **142** (2013) 517.
doi: <http://dx.doi.org/10.1016/j.biortech.2013.04.120>
46. Tokutomi, T., Operation of a nitrite-type airlift reactor at low DO concentration, *Water Sci. Technol.* **49** (2004) 81.
47. Zhang, B., Chen, Z., Qiu, Z., Jin, M., Chen, Z., Lin, J., Wang, X., Wang, J., Dynamic and distribution of ammonia-oxidizing bacteria communities during sludge granulation in an anaerobic-aerobic sequencing batch reactor, *Water Res.* **45** (2011) 6207.
doi: <http://dx.doi.org/10.1016/j.watres.2011.09.026>
48. Sheng, G., Yu, H., Yu, Z., Extraction of extracellular polymeric substances from the photosynthetic bacterium *Rhodospseudomonas acidophila*, *Appl. Microbiol. Biotechnol.* **67** (2005) 125.
doi: <http://dx.doi.org/10.1007/s00253-004-1704-5>
49. Karapanagiotis, Rudd, N. K., Sterritt, T. R. M., Lester, J. N., Extraction and characterisation of extracellular polymers in digested sewage sludge, *J. Chem. Technol. Biotechnol.* **44** (1989) 107.
doi: <http://dx.doi.org/10.1002/jctb.280440203>
50. Liu, Y., Fang, H. H. P., Influences of Extracellular Polymeric Substances (EPS) on Flocculation, Settling, and Dewatering of Activated Sludge. *Environ. Sci. Technol.* **33** (2003) 237.
doi: <http://dx.doi.org/10.1080/10643380390814479>
51. Vlyssides, Barampouti, A., Mai, E. M. S., Influence of ferrous iron on the granularity of a UASB reactor, *Chem. Eng. J.* **146** (2009) 49.
doi: <http://dx.doi.org/10.1016/j.cej.2008.05.011>
52. Li, H., Wen, Y., Cao, A., Huang, J., Zhou, Q., Samasundaran, P., The influence of additives (Ca^{2+} , Al^{3+} , and Fe^{3+}) on the interaction energy and loosely bound extracellular polymeric substances (EPS) of activated sludge and their flocculation mechanisms, *Biore-sour. Technol.* **114** (2012) 188.
doi: <http://dx.doi.org/10.1016/j.biortech.2012.03.043>
53. Keiding, K., Nielsen, P. H., Desorption of organic macromolecules from activated sludge: Effect of ionic composition, *Water Res.* **31** (1997) 1665.
doi: [http://dx.doi.org/10.1016/S0043-1354\(97\)00011-0](http://dx.doi.org/10.1016/S0043-1354(97)00011-0)
54. Liu, L., Gao, D., Zhang, M., Fu, Y., Comparison of Ca^{2+} and Mg^{2+} enhancing aerobic granulation in SBR, *J. Hazard. Mater.* **181** (2010) 382.
doi: <http://dx.doi.org/10.1016/j.jhazmat.2010.05.021>
55. Hui, F., Labbé, J. P., Lédion, J., Analysis of mineral fraction of biofilms by infrared absorption spectrometry, *Tech. Sci. Methods.* **5** (2008) 21.
56. Badireddy, A. R., Chellam, S., Gassman, P. L., Engelhard, H. M., Lea, A. S., Rosso, K. M., Role of extracellular polymeric substances in bioflocculation of activated sludge microorganisms under glucose-controlled conditions, *Water Res.* **44** (2010) 4505.
doi: <http://dx.doi.org/10.1016/j.watres.2010.06.024>
57. Zhang, J., Liu, W., Sun, W., Xu, N., Ni, J., Study on Adsorption Behavior of Pb^{2+} and Cd^{2+} by Extracellular Polymeric Substances, *J. Beijing. Univ. TCM.* **49** (2013) 514.